

Kleinmann Wang presents

# PARKLANDS ARENA

the world's most functional stadium... for western-Sydney

Introducing the world's most commercially-viable, environmentally-sustainable, and community-oriented stadium

### Stadium features

- Stadium 'working' title**  
Parklands Arena
- Location**  
Western Sydney corridor  
Fairfield/Liverpool NSW Australia
- Ground-breaking (Projected)**  
late 2015
- Opening (Projected)**  
2019/2020
- Roof**  
Translucent  
Retractable over Field-of-play (East/West)
- Environmental features**  
Solar panel roof (photovoltaic panels)  
Translucent roof for natural light  
Bowl-shaped roof as rain-water catchment  
Submerged tanks for rain-water and grey-water reuse  
Near-by T-Way and Bicycle-Way
- Field-of-play**  
Retractable (50 minutes duration, in-to-out)  
Hybrid natural and artificial turf, ratio 0.6/0.4  
Concrete ground base
- Number of jobs created**  
Government to create and subsidise  
400 apprenticeships for local youth  
More than 2,000 workers to work on project
- Field-of-play dimensions**  
Width, up to 70 meters  
Length, up to 120 meters
- Footprint (Building)**  
15.5 hectares
- Stadium height (Levels)**  
6 levels, plus one sub-ground
- Stadium features**  
Large in-stadia 4-way video-screen  
Ex-stadia Super-Screen  
Corporate Suites & VIP Facilities, including 136  
Field-Level, Mid-Level, and Sky suites  
Capacity of 39,000 seats (expandable to 54,000 seats at no additional construction cost and within 10 days)
- Lighting**  
LED, multi-coloured, up to 3,500 LUX
- Construction cost**  
A\$600 million to A\$1.150 billion (est. 2013)
- Financial Viability Plan**  
Stadium capital costs recovered in 19 years based on 60% retail and commercial space occupancy, 20 match-days and 10 concerts/exhibition days per annum
- Design and Concept by**  
Kleinmann Wang
- Available event days**  
365

### ABOUT KLEINMANN WANG

Since its establishment in 2007, Kleinmann Wang has quickly established itself as the 'go-to' business partner for sporting organisations who take their performance in the front-office as seriously as they do on the field or track.

With collective experience and know-how spanning more than 120 years across every function of a pro sports organisation, Kleinmann Wang has, and continues to work with, more than 90 organisations in over 70 countries,

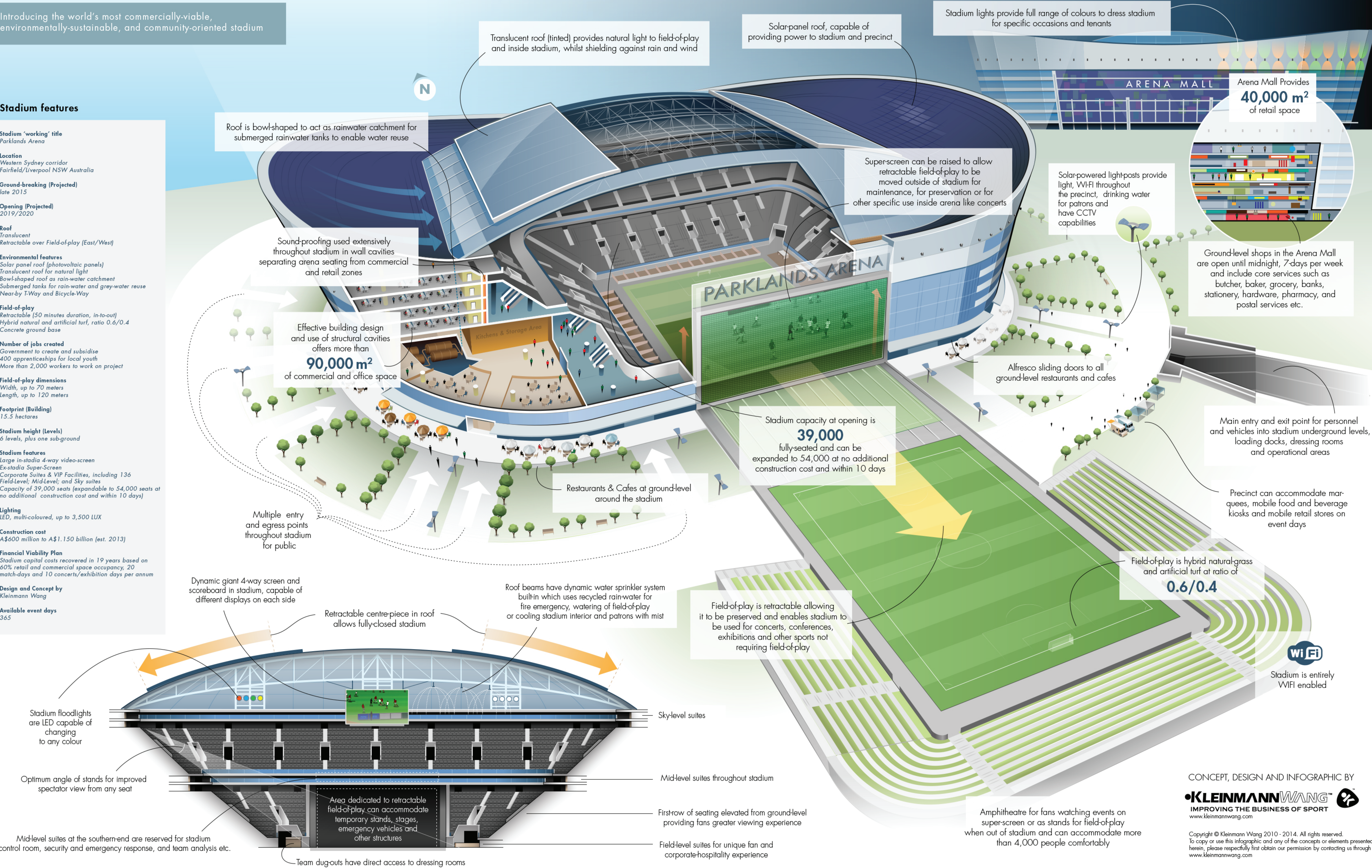
including some of the most renowned and respected organisations, teams and events globally.

Recently, our support has included establishing and strengthening pro leagues and clubs for our clients; expanding and improving our clients' revenue streams; successfully developing and executing long-term strategies with and for them; and ultimately improving their governance, management and operational efficiencies and capabilities which have helped them become stronger organisations.

With an insatiable passion for sports - and a wealth of industry intelligence and experience that provides us with insight in the business of sport - we work with our clients to make the decisions that drive immediate results.

**KLEINMANNWANG**  
IMPROVING THE BUSINESS OF SPORT

Welcome to Kleinmann Wang.



### Facilities & Amenities

University Campus (sports-related)  
Private Gym for pro sports tenants  
Public Gym  
Fully-staffed Police-Citizens Youth Club  
Public Movie Theatre/Cinema  
Sports Hall of Fame, regional  
24-hour Medical Centre (full-service)

Multiple Child-care Centres & Creches  
Sports Medicine & Science Labs  
Boutique Hotel, with rooms dedicated for elite sports teams  
Commercial Office space  
Retail Mall  
Merchandise Super-store  
Restaurants, Cafes & Staff Cafeteria  
Police Station

Conference & Lecture Rooms  
2 x Function Centres for up to 1,000 people  
4 x fully equipped change-rooms with large ice baths, warm-up areas & meeting rooms  
2 x mid-sized change-rooms  
6 x small change-rooms  
Merchandise kiosk-store on each level inside stadium for patrons  
Various rooms inside stadium for doping-control, stadium control, infotainment, technical-study etc.

Amphitheatre with public Super-Screen  
T-Way Hub Station  
Bicycle & Car-parking Station  
Heli-pad  
Dedicated family-only seating section, for up to 500 persons, with expanded seating bays accommodating prams & strollers, and access to family-only parent-rooms, bathrooms, and dedicated concession and food stalls

### Uses

Rugby League & Union  
Football (Soccer)  
American Football  
Basketball & Netball  
Tennis  
Ice Hockey & Ice shows  
Field Hockey

Motor Racing  
Equestrian & Rodeo  
Boxing & Martial Arts  
Conferences & Seminars  
Concerts  
Markets & Fairs and other

CONCEPT, DESIGN AND INFOGRAPHIC BY

**KLEINMANNWANG**  
IMPROVING THE BUSINESS OF SPORT  
www.kleinmannwang.com

Copyright © Kleinmann Wang 2010 - 2014. All rights reserved.  
To copy or use this infographic and any of the concepts or elements presented herein, please respectfully first obtain our permission by contacting us through www.kleinmannwang.com